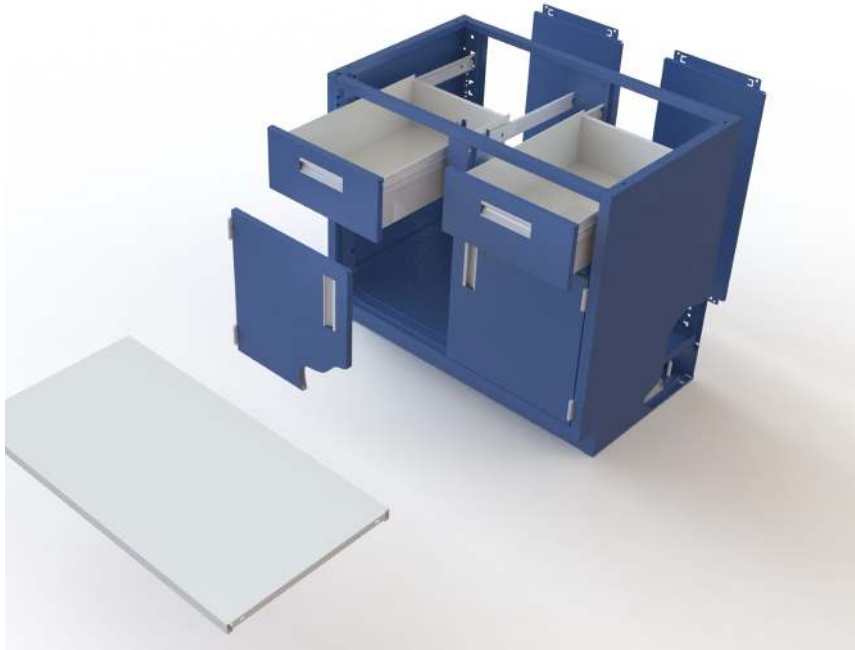


Following our half-century tradition of manufacturing high quality laboratory equipment, we offer a complete line of metal casework that match the rigorous demands of the professional laboratory. All of our casework is SEFA compliant and is built with the end-user in mind. Removable backs and shelves make installation simple while also giving the customer flexibility to meet their specific requirements. Offered in several standard paint colors (including two-tone options), iQ Labs casework is not only functional, but also gives your laboratory a professional look and feel.

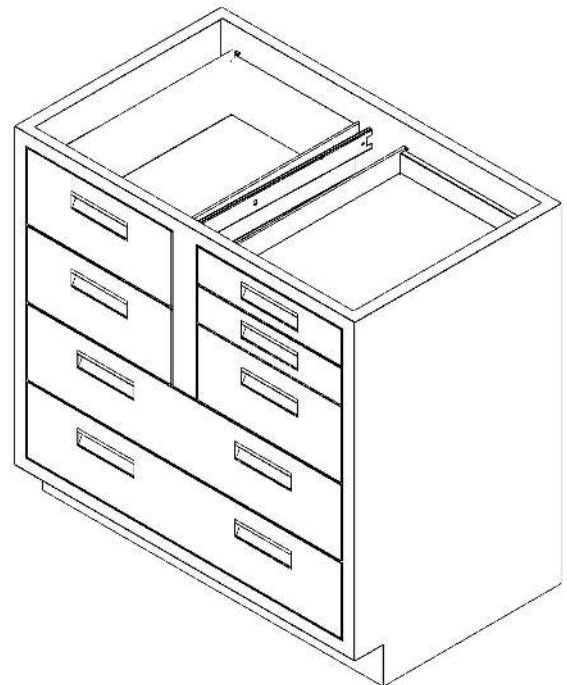


PERFORMANCE AND AFFORDABILITY - WITHOUT COMPROMISE

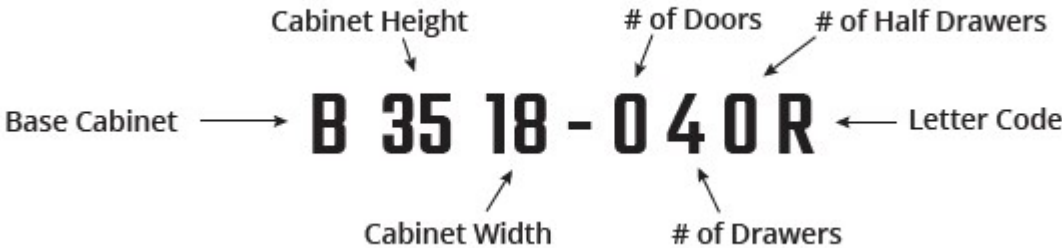
- Chemical resistant epoxy powder-coat
- Built with 18 gauge premium cold rolled steel
- Removable backs and removable bottoms for easy installation and cleaning
- Full-extension, heavy-duty ball-bearing slides
- Stainless steel, five knuckle door hinges
- SEFA Compliant

OPTIONAL EQUIPMENT

- Additional handle options available
- Specialty flammable and acid cabinets available
- Knee-space and filler panels
- Two-tone paint
- Available in ADA heights
- Additional Shelves
- Pull-out Shelves
- Lazy-Susan for corner cabinets



iQ Labs casework uses a simple product numbering system based on the products' configuration. Unless otherwise indicated, numbers before the dash indicate product type and nominal dimensions, while numbers after the dash indicate (in order) the number of doors, drawers, and half-high drawers.



- Aprons 18 Gauge
- Back Panels 20 Gauge
- Bottom Panels 18 Gauge
- Drawer Outer Panels 20 Gauge
- Drawer Bodies 20 Gauge
- Door Inner/Outer Panels 20 Gauge
- Shelves 18 Gauge
- Side Panels 18 Gauge



STANDARD COLOR OPTIONS (CUSTOM COLOR-MATCH AVAILABLE)

