

# BV SERIES - BENCHTOP FUME HOOD



Customer Name: \_\_\_\_\_

Indicate Color: \_\_\_\_\_

Indicate Qty: \_\_\_\_\_

Work Order #: \_\_\_\_\_

Light Switch   Blower Switch   Blank Cover Plate   Alarm   *(Circle One)*

Indicate Plumbing Service - if none, leave blank \_\_\_\_\_

Indicate Plumbing Service - if none, leave blank \_\_\_\_\_

Indicate Plumbing Service - if none, leave blank \_\_\_\_\_

Indicate Plumbing Service - if none, leave blank \_\_\_\_\_

Indicate Plumbing Service - if none, leave blank \_\_\_\_\_

Blank   GFI Duplex   GFI Simplex   Std Duplex   Std Simplex   *(Circle One)*

Light Switch   Blower Switch   Blank Cover Plate   Alarm   *(Circle One)*

Indicate Plumbing Service - if none, leave blank \_\_\_\_\_

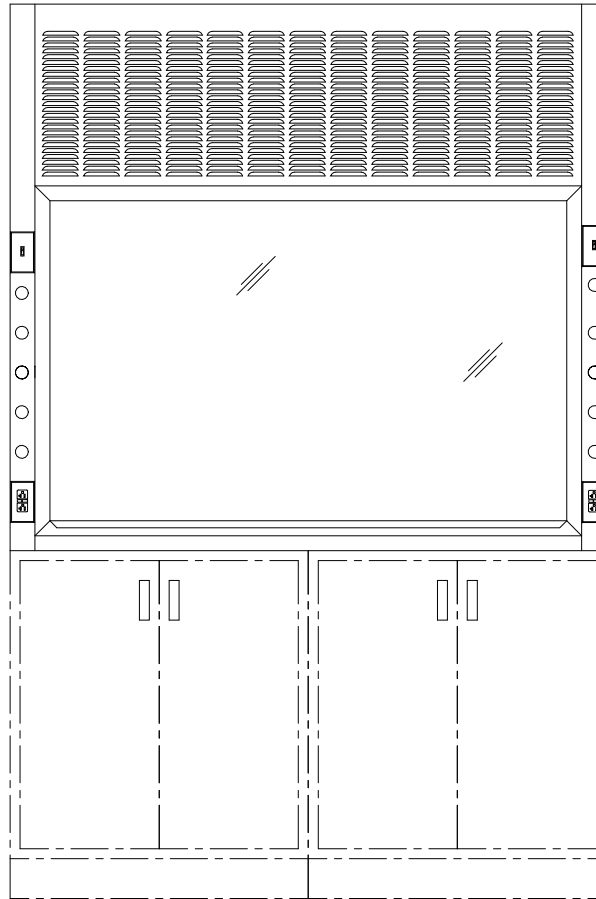
Indicate Plumbing Service - if none, leave blank \_\_\_\_\_

Indicate Plumbing Service - if none, leave blank \_\_\_\_\_

Indicate Plumbing Service - if none, leave blank \_\_\_\_\_

Indicate Plumbing Service - if none, leave blank \_\_\_\_\_

Blank   GFI Duplex   GFI Simplex   Std Duplex   Std Simplex   *(Circle One)*



LENGTH (CHOOSE ONE)

- 36"    48"    60"    72"    96"

## INTERIOR LINER OPTIONS

POLYRESIN (STANDARD)

STAINLESS STEEL T304

FIXED BAFFLE (NON STANDARD)

## PLUMBING PRE-PIPING

PRE-PIPE DOWN

PRE-PIPE UP

## LIGHTING OPTIONS

LED (STANDARD)

EXPLOSION PROOF LIGHT

## CABINET OPTIONS

ACID

FLAMMABLE

HOOD BASE

SINK BASE

## ADDITIONAL OPTIONS

ADA FRONT POST CONFIG

CEILING ENCL. (height \_\_\_\_")

SASH STOPS

CORROSION RESISTANT HARDWARE

## SASH CONFIGURATION

VERTICAL SASH (STANDARD)

HORIZONTAL SASH

COMBINATION SASH

INTERLOCKING SASH

## ALARM & CONTROLLER OPTIONS

AFA 500 AIRFLOW MONITOR

AFA 1000 AIRFLOW MONITOR W/DIGITAL DISPLAY

AFA 4000/2 VAV CONTROLLER

SASH ALARM