

**5' Defender Series Benchtop Fume Hood  
Model BVBP60PV**

**Exterior Superstructure**

- 18 gauge cold rolled steel, double wall construction, chemical resistant powdercoat.

**Interior Superstructure**

- 16 gauge galvanized steel

**Left/Right Corner Posts and Front Panel**

- 18 gauge painted steel with 2 electrical knockouts and 4 plumbing knockouts per post.

**Liner Material**

- Fiberglass reinforced molded plastic

**Side Panels**

- Removable 18 gauge painted steel – both sides of hood

**Baffles**

- Fixed location, removable fiberglass reinforced molded plastic

**Interior Access Panels**

- Located on interior side walls, molded plastic frame with quick release clips for easy access.

**Airfall**

- Painted 16 gauge steel or stainless steel

**Sash**

- Painted 18 gauge steel
- Laminated safety glass .25" thick
- Counterweighted and balanced
- Pulley system
- Sash stop @ 18" optional

**Electrical Fixtures**

- 48" LED Light w/switch

**Alarm/Monitor**

- Available upon request

**Wiring**

- Pre-wired at factory
- Connections made at junction box on top of hood
- 115-120v, 50/60 Hz

**VAV**

- Available upon request

**Service Fixtures**

- Available upon request

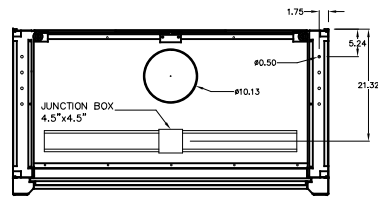
**Required Accessories – Sold Separately**

- Remote blower
- Supporting base cabinets
- Worksurface

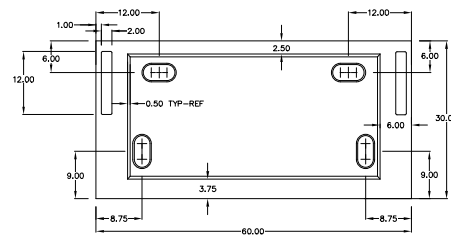
**Assembly and Crating**

- Pre-assembled at factory
- Palletized

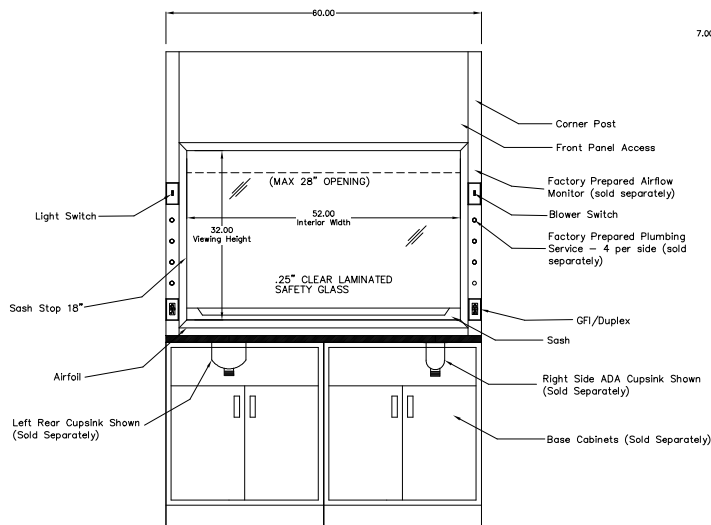
CFM Table		
Sash Full Open	Sash @ 18"	CFM
100	160	1011
90	128	909
80	96	808
70	80	707
60	64	606



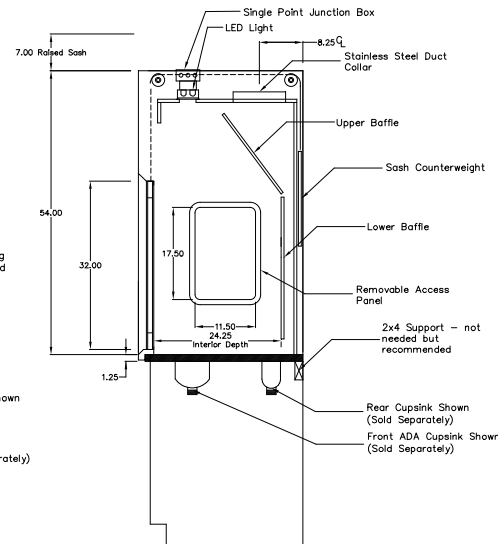
Top View



Work Surface (sold separately) – model numbers differ based on cup sink location



Front View



Side View

**NOTE:**

1. MODEL VIEWS MAY NOT REPRESENT EXACT MODEL PURCHASED.

ALL DIMENSIONS ARE IN INCHES UNLESS NOTED OTHERWISE	DWN BY: XYZ	DATE DWN: 3/23/26
DECIMALS: X = ± .000	APR BY:	DATE APR:
.XX = ± .020		
.XXX = ± .010		
ANGLES: = ± 1°	APR BY:	DATE APR:
CABINET SQUARENESS = ± .0625		

CONFIDENTIAL:  
ALL DESIGN RIGHTS RESERVED  
THE INFORMATION, DATA, DESIGN, AND DRAWINGS EMBODIED IN THIS DOCUMENT AND ALL REPRODUCTIONS THEREOF ARE THE EXCLUSIVE PROPERTY OF IQ LABS. THESE DOCUMENTS ARE SUPPLIED WITH THE UNDERSTANDING THAT THEY WILL NOT BE DISCLOSED TO THIRD PARTIES WITHOUT WRITTEN CONSENT OF IQ LABS. ANY REPRODUCTION IN PART OR WHOLE WITHOUT WRITTEN CONSENT IS SUBJECT TO LEGAL ACTION.



6172 Valduga Dr SW, Ste B  
Byron Center, MI 49315  
iq-laboratory.com

TITLE:  
**UNIT TYPE  
ASSEMBLY DRAWING**

DRAWING NUMBER:	SCALE:	SHEET:	REVISION:
<b>BVBP60PV</b>	NTS	1 OF	REV A

REV.	DESCRIPTION	DATE	NAME	ECN No.
A	CREATED SHOP DRAWING	3/23/26	NAT	N/A
REVISION LEVEL				