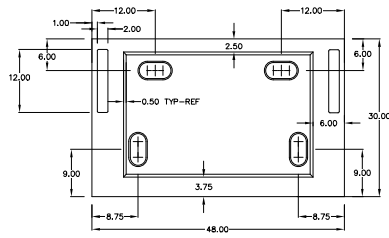
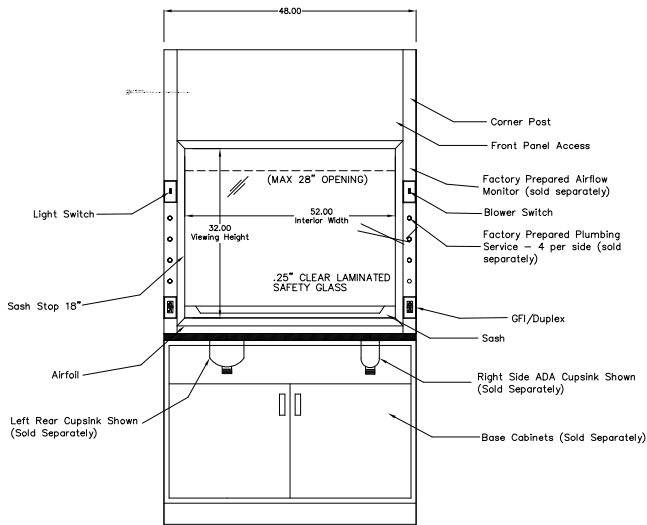


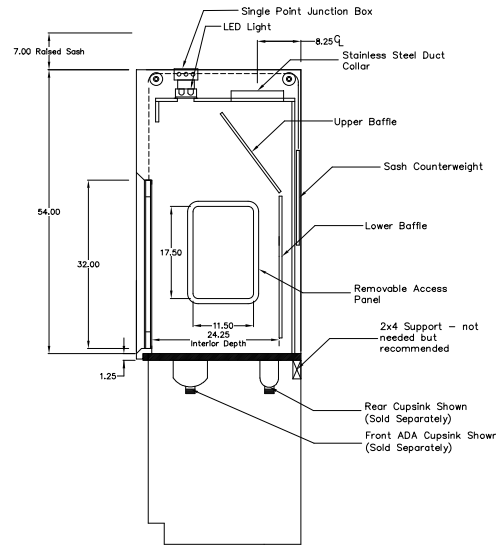
Top View



Work Surface (sold separately) - model numbers differ based on cupsink location



Front View



Side View

4' Defender Series Benchtop Fume Hood Model BVBP48PV

Exterior Superstructure

- 18 gauge cold rolled steel, double wall construction, chemical resistant powdercoat.

Interior Superstructure

- 16 gauge galvanized steel

Left/Right Corner Posts and Front Panel

- 18 gauge painted steel with 2 electrical knockouts and 4 plumbing knockouts per post.

Liner Material

- Fiberglass reinforced molded plastic

Side Panels

- Removable 18 gauge painted steel - both sides of hood

Baffles

- Fixed location, removable fiberglass reinforced molded plastic

Interior Access Panels

- Located on interior side walls, molded plastic frame with quick release clips for easy access.

Airfall

- Painted 16 gauge steel or stainless steel

Sash

- Painted 18 gauge steel
- Laminated safety glass .25" thick
- Counterweighted and balanced
- Pulley system
- Sash stop @ 18" optional

Electrical Fixtures

- 48" LED Light w/switch

Alarm/Monitor

- Available upon request

Wiring

- Pre-wired at factory
- Connections made at junction box on top of hood
- 115-120v, 50/60 Hz

VAV

- Available upon request

Service Fixtures

- Available upon request

Required Accessories - Sold Separately

- Remote blower
- Supporting base cabinets
- Worksurface

Assembly and Crating

- Pre-assembled at factory
- Palletized

CFM Table		
Sash Full Open	Sash @ 18"	CFM
100	160	777
90	128	700
80	96	621
70	80	543
60	64	466

NOTE:

1. MODEL VIEWS MAY NOT REPRESENT EXACT MODEL PURCHASED.

ALL DIMENSIONS ARE IN INCHES UNLESS NOTED OTHERWISE	DWN BY:	XYZ	DATE DWN:	3/23/26
DECIMALS: X = ± .000	APR BY:		DATE APR:	
.XX = ± .020	APR BY:		DATE APR:	
.XXX = ± .010	APR BY:		DATE APR:	
ANGLES: = ± 1°0'	APR BY:		DATE APR:	
CABINET SQUARENESS = ± .0625	APR BY:		DATE APR:	

CONFIDENTIAL:
ALL DESIGN RIGHTS RESERVED
THE INFORMATION, DATA, DESIGN, AND DRAWINGS EMBODIED IN THIS DOCUMENT AND ALL REPRODUCTIONS THEREOF ARE THE EXCLUSIVE PROPERTY OF IQ LABS. THESE DOCUMENTS ARE SUPPLIED WITH THE UNDERSTANDING THAT THEY WILL NOT BE DISCLOSED TO THIRD PARTIES WITHOUT WRITTEN CONSENT OF IQ LABS. ANY REPRODUCTION IN PART OR WHOLE WITHOUT WRITTEN CONSENT IS SUBJECT TO LEGAL ACTION.



6172 Valduga Dr SW, Ste B
Byron Center, MI 49315
iq-laboratory.com

TITLE: UNIT TYPE ASSEMBLY DRAWING			
DRAWING NUMBER: BVBP48PV	SCALE: NTS	SHEET: 1 OF	REVISION: REV A

REV.	DESCRIPTION	DATE	NAT	ECN No.
A	CREATED SHOP DRAWING	3/23/26	NAT	N/A
REVISION LEVEL				